

# SCREEN <sup>2</sup> SPACE

FRAMELESS GLAZED SCREENS FOR YOUR

HOMES - APPARTMENS - RETAIL - BUSINESS  
BALCONY - PATIOS - KITCHEN PARTIIONS - OFFICE



5 YEARS  
WARRANTY

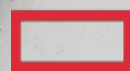


34 DB  
ACOUSTIC  
INSULATION



98%  
WATER & AIR  
TIGHTNESS

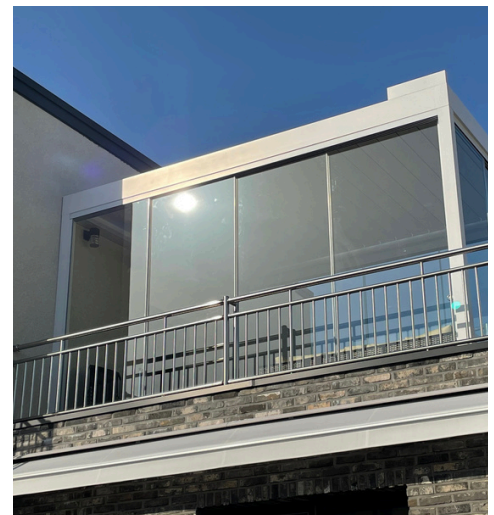
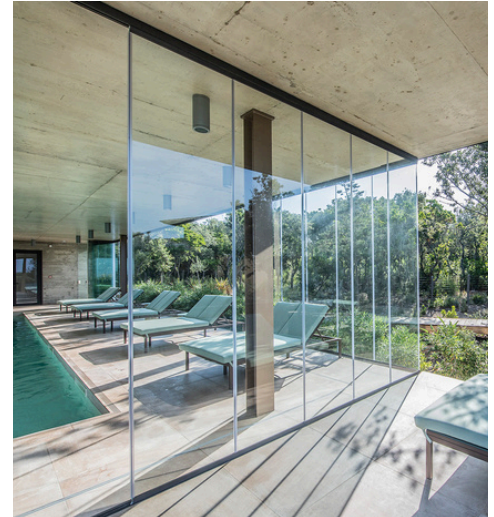
FROM RM1250  
PER FOOT RUN



CLAROFLEX<sup>®</sup>  
PIVOT SYSTEM



# TYPES OF USAGE



## CLAROFLEX® PIVOT GLAZING SYSTEM ADVANTAGES

- The system is a continuous, almost imperceptible, glass surface. The absence of vertical frames creates an effect of clear **panoramic view**.
- The **system is manufactured in Europe** & passed all the necessary tests and certifications.
- The system transmits the weight to the floor providing **enhanced stability** and safety as the glass panels are not suspended from the top track unlike other systems
- According to the results of tests in independent laboratories, CLAROFLEX® PIVOT is the most **air-tight** and **waterproof** system on the market, well suited for **tropical** climates

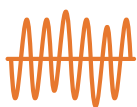
## BENEFITS OF THE SYSTEM

- The system operates on the principle of **sliding**: the panels glide smoothly over a special sliding surface. The system does not need bearings or rollers, so **maintenance is almost inexistent**.
- Bottom weighted system, the weight of the system is evenly distributed on the bottom track, which ensures high **stability & safety**.
- Glass **without special notches or drill holes** are used in the production of the system.
- The system can be **easily levelled** to compensate the unevenness of the construction. Just by using the top and bottom levelling tracks, you will have **68 mm** of regulation.

## SYSTEM SPECS



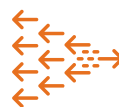
5 YEARS  
WARRANTY



34 DB  
ACOUSTIC  
INSULATION



CLASS 2  
AIRTIGHTNESS



CLASS 6 WIND  
RESISTANCE

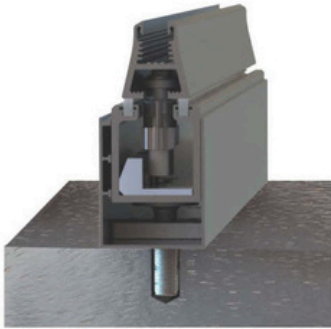
- WITH OUT SIDELOCK 139 KM/H WIND RESISTANCE
- WITH SIDELOCK 239 KM/H WIND RESISTANCE



20% 5.6  
W/M2K  
THERMAL  
INSULATION

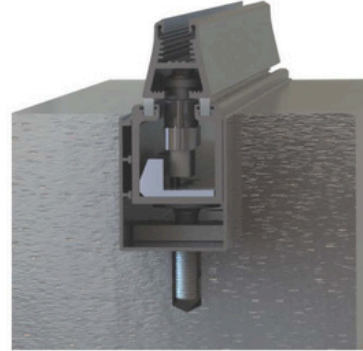


## CLAROFLEX® PIVOT SYSTEM FLOOR FINISHES



### SYSTEM OVER THE FLOOR

THE ENSEMBLE OF BOTH THE  
LEVELLING PROFILE AND  
BOTTOM TRACK IS ONLY 54  
MM HIGH AND IT IS  
INSTALLED OVER THE  
FINISHED FLOOR.



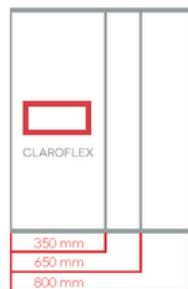
### RECESSED

THE ENSEMBLE OF BOTH THE  
LEVELLING PROFILE AND  
BOTTOM TRACK IS ONLY 54  
MM HIGH AND IT IS  
EMBEDDED IN THE FLOOR



#### SYSTEM HEIGHT:

Maximum system height with 8 mm  
glass is 2700 mm.  
Maximum system height with 10 mm  
glass is 3200 mm.  
Maximum system height with 12 mm  
glass is 3200 mm.



#### PANEL WIDTH:

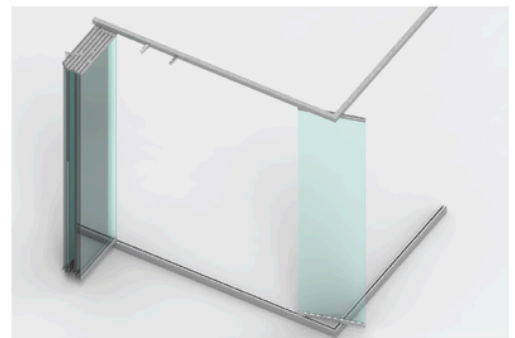
Recommended width: 650 mm.  
Maximum panel width: 800 mm.  
Minimum panel width: 350 mm.



#### INSTALLATION OF DOOR COMPONENTS:

Locks are usually set at 1100 mm  
from the floor.

Panels can move through corners with angles  
between 90° and 270°.



Glazings with a corner joint do not require any  
additional structural reinforcement.

